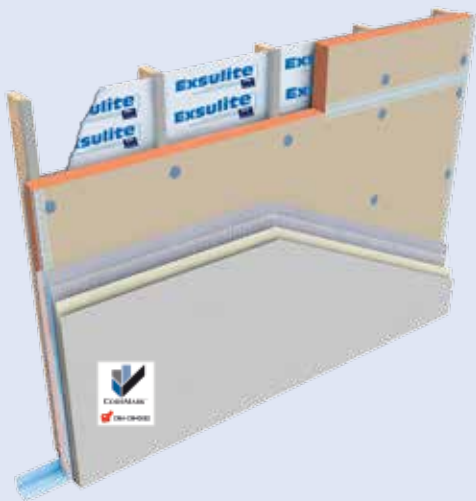


The solution to lightweight facade systems



Total Dulux System



Full System Compliance



Assured Installation

Kooltherm®

Exsulite®
Thermal Facade System by 

Get a fully certified system - Installed

1. Compliant to Building Code of Australia

The Exsulte®-Kooltherm® Facade System by Dulux® AcraTex® provides a weatherproof building & Insulation system for various Residential, Commercial and Multi-Residential applications.

The Exsulte-Kooltherm Thermal Facade System is a light weight total walling system used as an alternative to masonry systems in the Multi-Residential Sector.

2. Uses

The Exsulte-Kooltherm Facade System is specified for Commercial and Multi-Residential External Walls to NCC **Volume One, Class 2 to 9 buildings** with wind loads calculated in accordance with AS/NZS 1170.2 and is fixed & finished to either steel or timber frame construction.

It is also specified for Residential External Walls to NCC **Volume Two, Class 1 and 10 buildings** with wind loads to either AS/NZS 1170.2 or AS 4055 "Wind loads for housing" for Wind Classifications N1,N2,N3,N4,N5,N6 and cyclone regions C1,C2,C3 and C4. fixed & finished to either steel or timber frame construction.

3. Exsulte System Certification (CodeMark CMA-CM40082)

The CodeMark Certificate of Conformity confirms Exsulte-Kooltherm as a Fully Integrated Facade System, complies with the relevant BCA clauses relating to :

- Structural performance, wind resistance
- Thermal performance
- Weatherproofing and damp proofing
- No component substitution - One supplier

Integration of System Design, Components and Installation is delivered through Exsulte Trained Installers to ensure "as built" meets design specification.

4. Dulux Exsulte Trained Installer Network

An Exsulte **Certificate of Installation** from a registered Exsulte Installer provides peace of mind that "as built" meets Design Specification.

Project QA Process is a critical element of the Exsulte Total System approach and the Exsulte Installer Network ensures Total Facade System compliance - From Start to Finish.

- Installer Training and Ongoing Development
- Registration and Verification ID
- Certificate of Installation checklist and QA sign-off

5. Wall cladding solutions for certifiers & builders

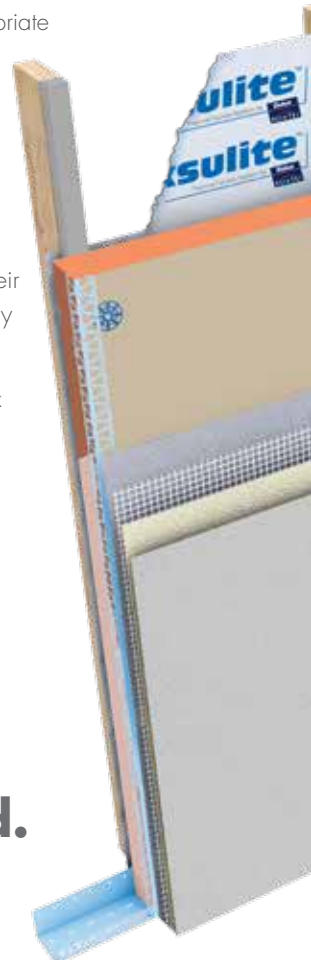
AcraTex is a pioneer in the use of EIFS systems, designing and installing systems specifically for Insulation benefits as originally used in Europe. In recent years the use of Lightweight Cladding Systems, as Alternate Solutions in the BCA. The BCA requires appropriate design and installation controls to qualify any Alternate Solution and ultimate success requires a total systems approach integrating Design, Componentry & Installation.

The Exsulte-Kooltherm Facade System by Dulux AcraTex provides peace of mind for building designers, surveyors, builders and their clients from the use risk of mixed componentry and uncontrolled installation.

The Exsulte-Kooltherm Facade System by Dulux AcraTex offers a single supply source from design to supply as a Total Integrated Facade System - Wallwrap & Cladding to the Finishing Weatherproof coating.

Kooltherm®

Quality assurance and peace of mind.



WHO CAN YOU TRUST?

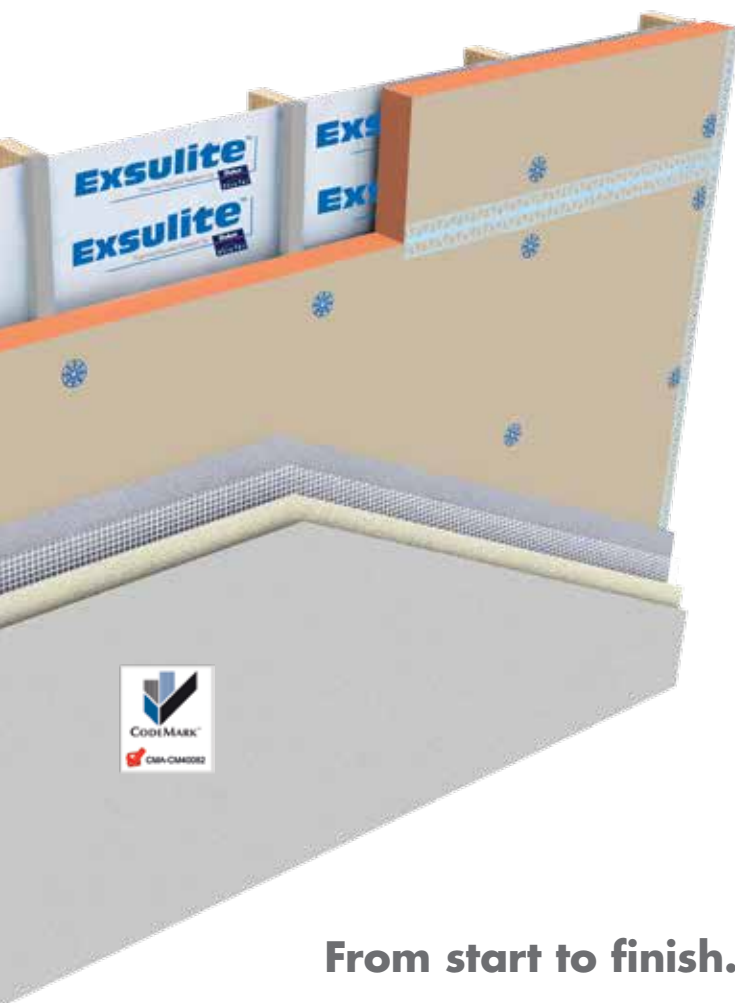


Exsulite®-KoolTherm® by Dulux® AcraTex®

- ✓ Full BCA Compliance as a Total Facade System
- ✓ Integrates Kingspan Kooltherm K5 External Wall Board into Exsulite System
- ✓ National Trained and Registered Installer Network
- ✓ High thermal performance

(Note: Thermal R Value R4-R7)

A "R" value system assessment report in accordance with AS/NZS 4859.1 can be provided upon request.



Full Compliance - Exsulite Componentry to Weatherproofing Finish

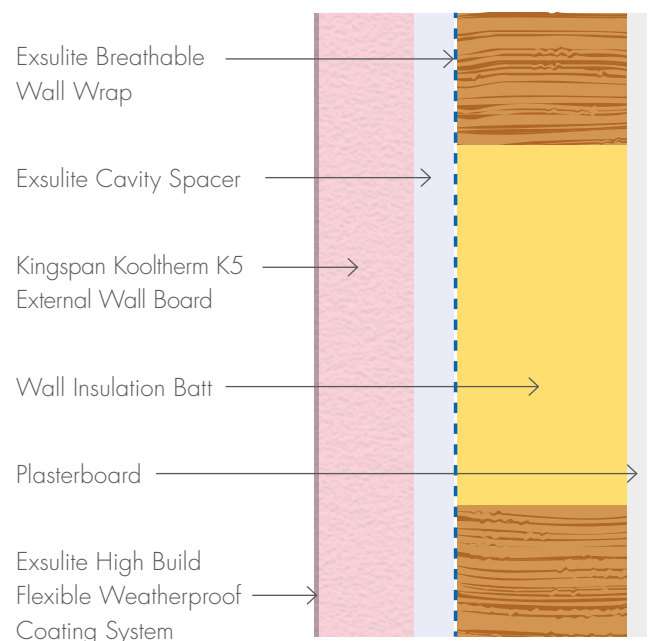
Exsulite is fully CodeMark certified as an integrated Facade System in compliance with the Building Code of Australia (BCA)

Total Confidence..

Fully certified system installed by Exsulite Registered Installers for total peace of mind.



Exsulite®-Kooltherm® Facade System View



The Exsulite-Kooltherm Thermal Facade System is a fully integrated system designed & supplied by Dulux AcraTex. The system integrates a Kingspan Kooltherm K5 External Wall Board that has a super high performance, fibre-free rigid Thermoset insulation core. It provides highly efficient thermal performance.

From start to finish...

Assured Installation

Weatherproofing Finish

Dulux Confidence

Totally Integrated System from Single Supplier

System Elements	Exsulite [®]	Alternative Systems
1. ONE SUPPLIER		
Fully integrated system design	✓	?
Detailed construction drawings	✓	?
Installed by trained installer	✓	?
QC job procedure and registration	✓	?
Certificate of Installation	✓	?
Energy Efficiency	✓	?
2. NO COMPONENT SUBSTITUTION		
Dulux [®] Breathable wall wrap	✓	?
Dulux Exsulite Cavity spaces	✓	?
Kingspan Kooltherm K5 External Wall Board	✓	?
Dulux Exsulite Fasteners, Fixings and accessories	✓	?
Dulux Exsulite Matrix basecoat with reinforcement mesh	✓	?
Dulux Exsulite Flexible acrylic texture	✓	?
Dulux Exsulite Weatherproof protective membrane top coat	✓	?
3. JOB QUALITY CONTROL AND TECHNICAL SUPPORT		
Installed by Exsulite Trained installer	✓	?
Technical support training	✓	?
Job registration and QA process	✓	?
Certificate of Installation - total confidence	✓	?
Product specific design specifications	✓	?

Make sure
you ask for a
certificate of
installation from an
**Exsulite
Trained
Installer.**



NEW CERTIFICATE TO BE SUPPLIED



Kooltherm[®]



For further information go to: www.exsulite.com.au
Dulux Customer Service: 1300 662 841
1 Jeanes Street, Beverley SA 5009 Australia

Dulux[®] AcraTex[®] is a division of DuluxGroup (Australia) Pty Ltd. ABN 67 000 049 427.
Dulux[®], AcraTex[®] and Exsulite[®] are registered trade marks of DuluxGroup (Australia) Pty Ltd.
Kooltherm[®] is a registered trademark of Kingspan Group plc and is used here with permission.