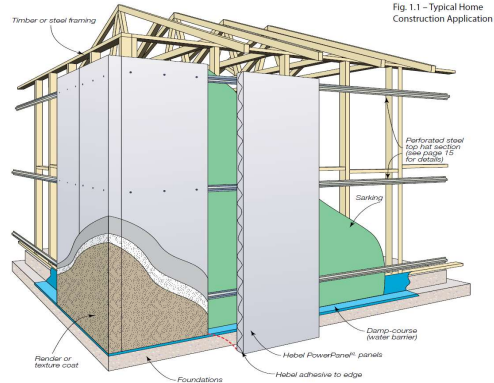
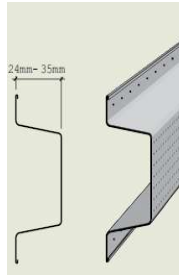
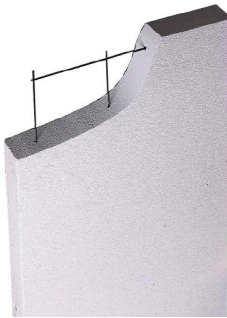


Frequently Asked Questions

Residential External Walls PowerPanelXL

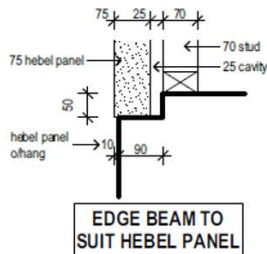
Q. What is the thickness of Hebel PowerPanelXL Walls?

A. Hebel PowerPanelXL is a 75mm thick panel attached to either a timber or steel frame via a 24mm Top Hat, making the substrate 99mm from the stud frame.



Q. What Slab edge detail is required?

A. Slab edge detail recommended is a 90mm wide rebate with a minimum 20mm – max 50mm high step down, concreter should be advised prior to work commencement. Concrete protruding past face of Hebel will need to be cut back prior to rendering.

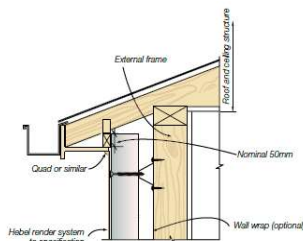


Q. What termite protection is required?

A. As per specifications supplied by the Termite protection manufacturer.

Q. Do soffits get installed prior to the Hebel walls?

A. No. Soffits should be installed after Hebel PowerPanelXL walls are installed, as per details below:



Q. What is the window reveal size? Do windows go in prior to the PowerPanelXL?

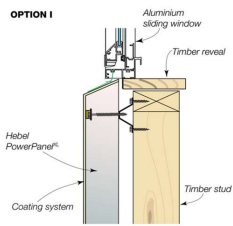
A. Installation of windows is done prior to the installation of the PowerPanelXL, and windows must be ordered with the following reveal sizes?

Stud Size 70mm	
Top Hat size	Reveal size**
24mm	100mm*
35mm	115mm
Stud Size 90mm	
Top Hat size	Reveal size**
24mm	120mm
35mm	135mm

Q. Do windows have sills?

A. Yes, sill panels are installed with 15° degree sill cut as per following detail:

*Detail 3.48 – Typical Window Sill Detail
– Aluminium Window Frame*

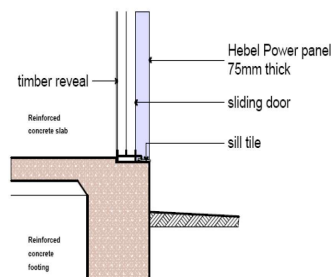


Typical Window Sill Detail – aluminium window frame

Note: Suggestion only – this is not compulsory, merely duplicates a window sill look.

Q. Can Hebel be used under door openings?

A. No, this is not recommended due to durability in a high traffic area. Recommend: concrete set down or tiler to pack sill tile to suit.



Q. What happens with the installation of services – electrical and plumbing?

ELECTRICAL

A. All electrical services should be installed through the stud frame so as not to foul the horizontal installation of Top Hats, as the Top Hats are not to be cut over services to allow for clearance. The Meter box can be face fixed to the outside of the PowerPanelXL's, or recessed into the stud frame through the PowerPanelXL, then all sides of the box sealed with a polyurethane sealant.

Power must be available on-site prior to installation.

PLUMBING

A. All plumbing services, hot and cold pipes should be installed through the stud frame so as not to foul the horizontal installation of Top Hats, as the Top Hats are not to be cut over the services to allow for clearance.

Water must be available on-site prior to installation.



Q. What type of fittings is used to attach things like downpipes or exterior light fittings to the Hebel Walls?

A. There are a number of available fixings on the market, usually coarse thread screws are adequate, otherwise nylon plugs (Ramset Ram plug-nylon, Powers Mungo Nylon Plug, Tox-Ytox Plug) are used; please refer to the fixing manufacturer's specifications or the Hebel fixing guide.

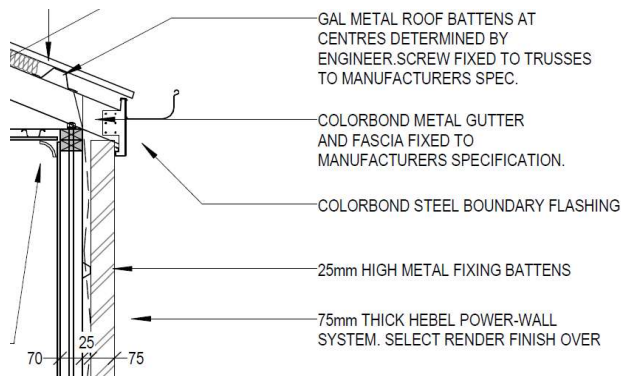
Cloths Lines need to be installed to fence or free standing posts, never into Hebel walls.

Q. Can Hebel PowerPanelXL walls be used on a Zero allotment?

A. Yes, Hebel PowerPanelXL walls will provide a 180/180/180 fire rating higher than BCA requirements.

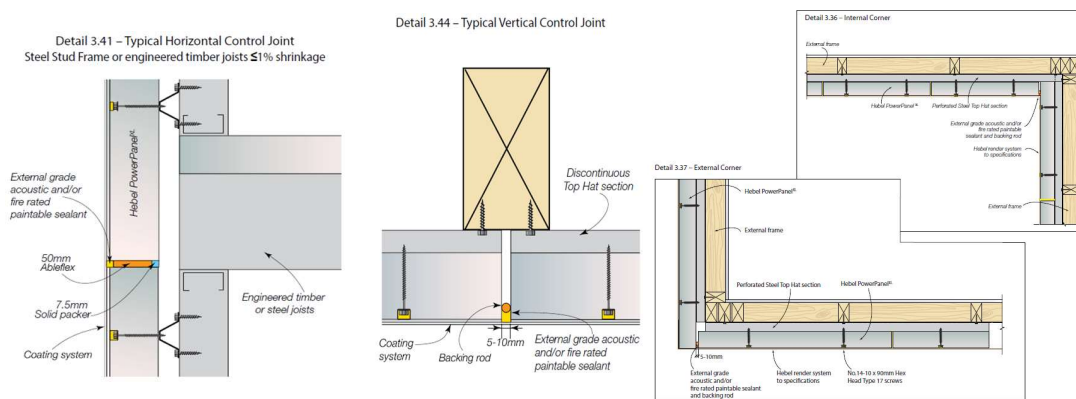
Q. Zero allotment/boundary wall fascia/gutter detail?

A. Fascia to be 100mm of frame or bracing ply to allow for Hebel panel installation.



Q. Do Hebel PowerPanelXL walls require control joints?

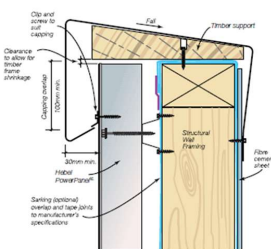
A. Yes, Vertical CJ's required at max 6m, internal and external corners and openings as specified in Design & Installation Guide. Horizontal CJ's required at every horizontal floor junction and max height of 3.9m.



Q. Can Hebel PowerPanelXL be used as a Parapet Capping?

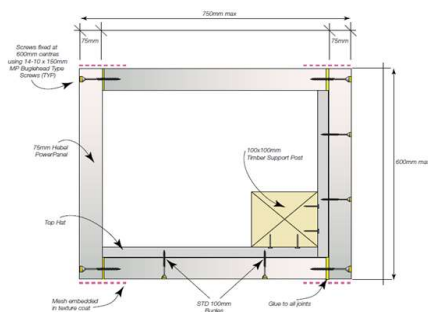
A. No, metal flashing is required.

Detail 3.31 – Parapet Capping

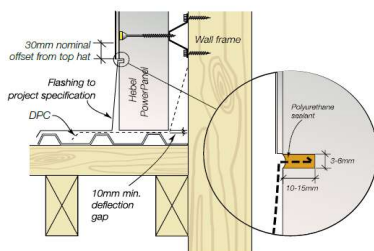


Q. Can PowerPanelXL be used for Columns/Piers?

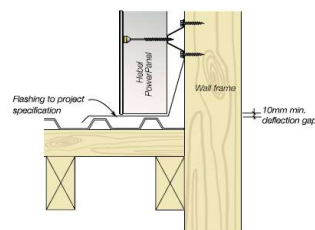
A. Yes, as per detail shown below. For columns/piers greater than 750mm a second post is required at opposite corner.



Q. How is the PowerPanelXL Installed and flashed when installed over roofs? Shown below.



Detail 3.29.1 Roof to Wall Junction Detail - Option 1



Q. Is scaffolding installed prior to Hebel Installation?

A. Yes, as follows.

- All lower level panel to be installed prior to scaffold erection.
- Hebel Innovations to be informed of upcoming upper floor installs to allow time to meet with supervisor & scaffolder.
- Clear access must be allowed to the bottom of @ least one bay on each side of the house for loading.
- Scaffold must be @ least 150mm from wall & no more than the max permitted in the standard.
- Hebel Installers must be able to walk around the entire scaffold without obstruction.
- When more than a two-stage scaffold is being used, a mid height-loading bay must be installed.
- A Medium Duty Scaffold should be used up to 450kg per bay & be at least 900mm wide.
- Base plates over lower roofs need to be @ least 150mm from wall.

Q. Do timber or steel beams above openings need blocking out?

A. Yes, to accept top hat installation.

Q. What is acceptable frame alignment between each level?

A. + 5mm or - 5mm

For further details please refer to the CSR Hebel "Houses and Low Rise Multi-Residential External Walls PowerPanelXL" Design and Installation Guide.